

Short Report



Divi-Blasii-Church Mühlhausen | ©TTG

Divi-Blasii-Church Mühlhausen

Untermarkt/Bachplatz
99974 Mühlhausen

Tel: +49 3601 446516
Fax: +49 3601 758400

service@touristinfo-muehlhausen.de
www.ekmhl.de und www.muehlhausen.de/tourismus

Welcome!

The Blasii Church in Mühlhausen's old town is one of the earliest Gothic hall churches in central Germany. It was built between 1270 and 1300 on the foundations of a previous building. It was built on the initiative of the Teutonic Bishop Kristan von Samland, who brought French cathedral architecture to central Germany. Significant furnishings include stained glass from the 13th century, a late Gothic altar of the Virgin Mary and tombstones of Bishop Kristan and the reformer Hieronymus Tilesius. An ornate decorative lattice separates the choir from the transept, which houses the triumphal cross, sacristy and a former library. Two mighty towers with bells from the 13th–15th centuries characterise the westwork. Johann Sebastian Bach worked here as organist in 1707/08.

TEST RESULT

for

Divi-Blasii-Kirche Mühlhausen

99974 Mühlhausen, Certificate-ID: PA-13141-2025



This offer was classified according to
the criteria of the nationwide label

»Tourism for All«

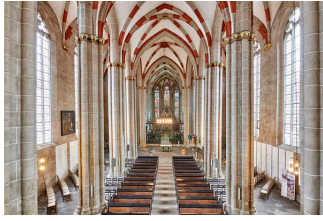
and, in the period from

May 2025 – April 2028

is entitled to use the label

»Accessibility checked«

and the associated pictograms
in accordance with the contract.



Divi-Blasii-Church
Mühlhausen

©TTG



Johann Sebastian
Bach memorial at the
church

©TTG

Overview

- Belongs to the earliest Gothic churches in Central Germany
- Place of work of Johann Sebastian Bach
- Church closed in winter – exception during city tours
- Organ tours can be booked via the Mühlhausen Tourist Information Centre

Accessibility at a glance

- Stepless access to buildings
- All rooms and facilities that can be used by guests are accessible without steps or via a ramp
- 90 cm minimum width of all passageways/doors
- WC for people with disabilities
- Assistance dogs welcome

Information for people with walking difficulties and wheelchair users

All areas relevant for testing meet the quality criteria of the label "**Accessibility certified – partially accessible for people with walking disabilities**".

We have compiled some **information on accessibility** below. Detailed information can be found in the test report.

- There is a parking lot, but none for people with disabilities.
- The Untermarkt bus stop is 100 m away.
- All rooms and facilities that can be used by guests are accessible without steps/at ground level or via a ramp. Some door thresholds are 5 cm high. The altar can only be reached via steps.
- All doors/passages and paths that can be used by guests are at least 90 cm wide.
- Exhibits and information are mainly visible from a seated position.
- Seating is available.
- There are two public WCs for people with disabilities (House of the Church and Kristanplatz), which can be accessed from at least one side (at least 80 cm). There is a folding grab rail at least on the accessible side.

Information for people with hearing impairments and deaf people

We have compiled some **information on accessibility** below. Detailed information can be found in the test report.

- There is no inductive hearing system.
- An alarm is not available.
- Information is provided in writing.

Information for visually impaired and blind people

We have compiled some **information on accessibility** below. Detailed information can be found in the test report.

- Assistance dogs are welcome.
- The signage (for orientation) is designed in easily legible and high-contrast lettering.
- All elevated areas that can be used by guests are brightly lit and glare-free.
- Steps do not have high-contrast edges.
- Stairs have a handrail on at least one side.
- Information on the exhibits is visually rich in contrast.
- Information is not available in Braille or prismatic writing.

Information for guests with cognitive impairments

We have compiled some **information on accessibility** below. Detailed information can be found in the test report.

- The name of the church is clearly recognizable from the outside.
- The Untermarkt bus stop is 100 m away.
- The destinations of the paths are within sight.
- There is no information in easy language.

Comfort for all generations

We have compiled some **information on accessibility** below. Detailed information can be found in the test report.

- Parking available around the church, no designated parking space for people with disabilities.
- The Untermarkt bus stop is 100 m away.
- The name of the church is clearly recognizable from the outside.
- All rooms and facilities that can be used by guests are accessible without steps/at ground level or via a ramp. Door thresholds are 5 cm high in places.
- Steps have no high-contrast edges. Stairs have a handrail on at least one side.
- All doors/passages and paths that can be used by guests and are raised are at least 90 cm wide.
- All raised areas that can be used by guests are brightly lit and glare-free.
- There is no inductive hearing system.
- There is no alarm.
- Seating is available.

- Information is provided in writing and is visually rich in contrast.
- The signage (for orientation) is designed in easily legible and high-contrast lettering.
- There are two public WCs (Haus der Kirche and Kristanplatz).

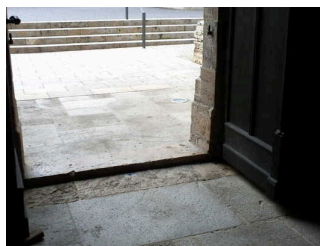
Image Gallery

We have put together some photos from the company / offer for you. You can find more photos in the detailed reports.



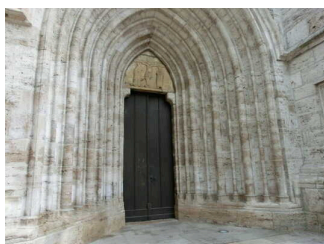
**Parking at the church
in the traffic-calmed
zone**

©Peggy Fauß



**Step (5 cm) at the
main entrance**

©Sylvia Engel



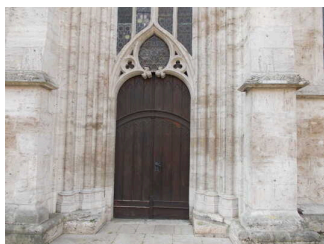
Main entrance

©Sylvia Engel



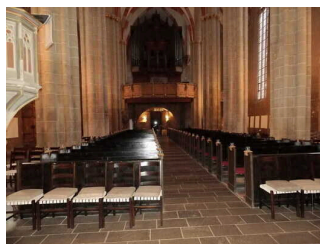
**Steps at the main
entrance**

©Peggy Fauß



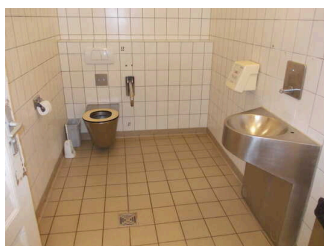
**Ground-level side
entrance**

©Peggy Fauß



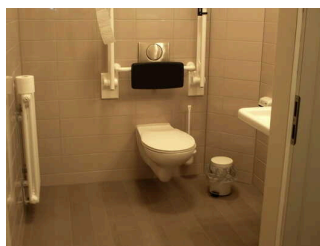
**Church nave and
concert room**

©Sylvia Engel



**Public toilet at
Kristanplatz**

©Peggy Fauß



**Public toilet in the
house of the church**

©Dorothea Lemke

Information on the "Tourism for All" labeling system

All establishments and locations certified with the label "Tourism for All" meet the following quality criteria:

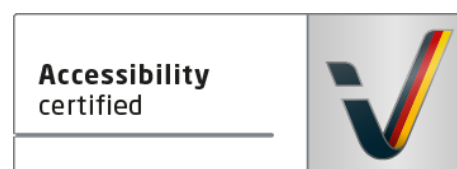
- Data and information on accessibility are collected and checked on site by **external, specially trained evaluators**. The method is not based on self-assessments.
- Data on accessibility is available **in detail** and can be viewed by the guests.
- At least one staff member has successfully passed a **training** on "**Accessibility as a comfort and quality feature**".

The labeling – explanation of the logos and pictograms

The label "**Information about Accessibility**" indicates that detailed and verified information on accessibility is available for all groups of people.



The label "**Accessibility certified**" is based on "Information about Accessibility". It means that the quality criteria defined for specific groups of people are met partially or completely.



The label "**Accessibility certified**" is available in two requirement levels:

"Accessibility certified: partially accessible".

The quality criteria are partially fulfilled for the pictured group of people, i.e. the establishment/location is partially accessible for wheelchair users. The "i" in the pictogram indicates that it is recommended to read again carefully whether the offer meets all (your oder the guest's) individual requirements.



"Accessibility certified: accessible".

The quality criteria are fulfilled for the pictured group of people, i.e. the establishment/location is accessible for wheelchair users.



There are defined quality criteria for **seven groups of people** and a **specific pictogram** for each group.

People with walking disabilities



Wheelchair users



People with hearing impairment



Deaf people



People with visual impairments



Blind people



People with cognitive impairments

